
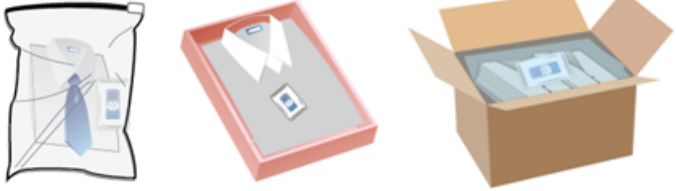



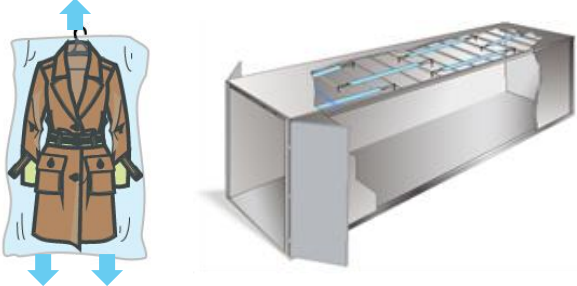

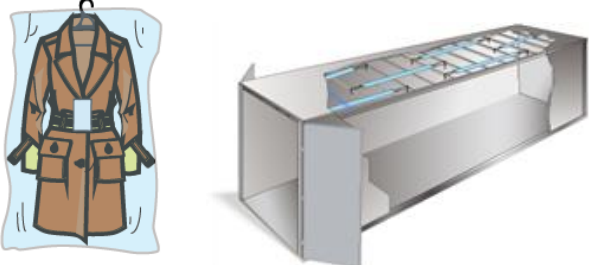


2 GENERAL MOISTURE PREVENTION SOLUTIONS

| | | |
|------------------------------------------------------------------------------------------------------------------------------|---------------------------------------------------------------------------------------------------------------------------------|--------------------------------------------------------------------------------------|
| <p>LCL</p> |  <p>DS 2-100g</p> |  |
| <p>Put Super Dry small package desiccant into an enclosed environment of your package (poly bag, box, carton, etc.)</p> | | |
| <p>FCL</p> |  <p>DS 2-100g DS 1000g</p> |  |
| <p>Put small package desiccant into your product package, and use DS 1000g in the container at the same time.</p> | | |
| <p>GOH</p> |  |  |
| <p>If GOH polybags with perforation, we suggest only using DS 1700g in the container.</p> | | |
| <p>GOH</p> |  <p>DS SUPER DRY RESISTANT XCL, DS 1700g</p> |  |
| <p>If GOH polybags without perforation, adhere 1 pc DS5g (Sticker) inside the polybag and use DS 1700g in the container.</p> | | |

4 MOISTURE PREVENTION SOLUTION FOR CONTAINER

Super Dry small container desiccant can protect your cargo to a large extent, but to maximize protection we suggest using container desiccant DS 1000g at the same time. This protects the environment inside the container to inhibit container rain/condensation during the ocean voyage.

4.1 THE SUGGESTED POSITION OF DS 1000G

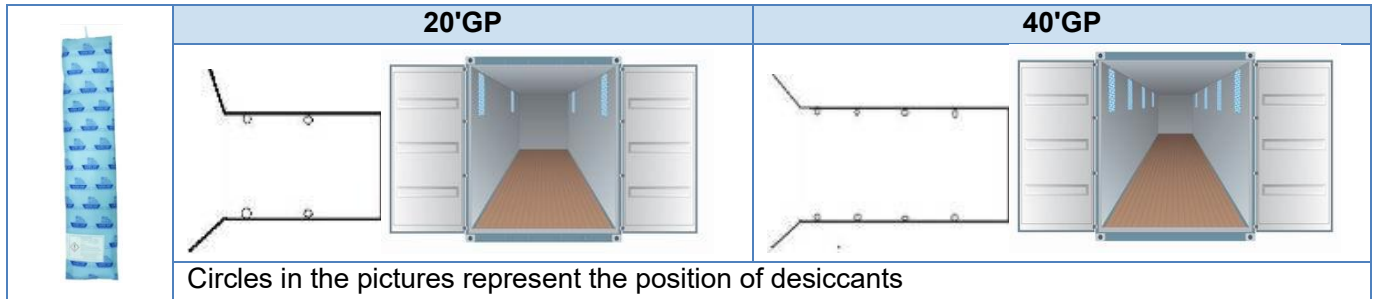


Table 3

4.2 GENERAL SUGGESTED DOSAGE OF DS 1000G

| Size of Container | Amount of DS 1000g (pcs) | |
|-------------------|--------------------------|----------------|
| | Wet season | Non wet season |
| 20'GP | 6 | 4 |
| 40'GP | 10 | 8 |
| 40'HQ | 12 | 10 |

Table 4

4.3 THE PROCEDURE OF USING DS 1000G

Preparation work before using desiccant:

(1) Inspect the container. Ensuring that:

- It is clean, dry, wind and water tight and fit for carriage of garments.
- It is free of damage: No "light leakage" from inside when container doors are closed; no holes or gaps in the floor or ceiling, gaps between floor and wall, etc.
- Doors close tightly and rubber seals in good condition.
- Surface clean and dry.
- Floor board properly dried after cleaning, no wet spots and feels dry when touching.

(2) Check moisture content of container floor.

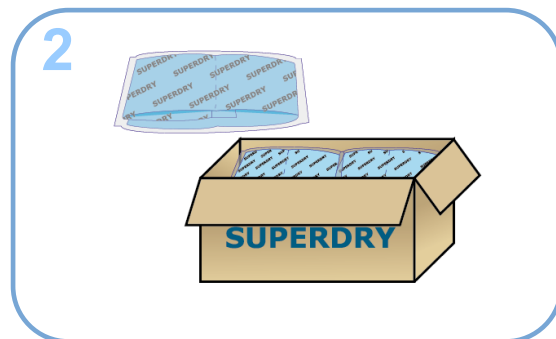
- ① If possible, do not use container with moisture content exceeding 20%. Or please increase the amount of desiccant in the container.
- ② Do not use container with floor moisture content exceeding 25%.

Use

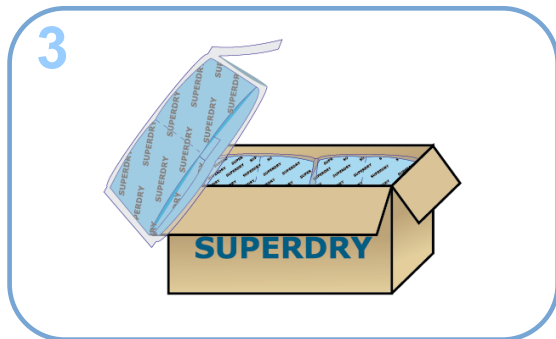




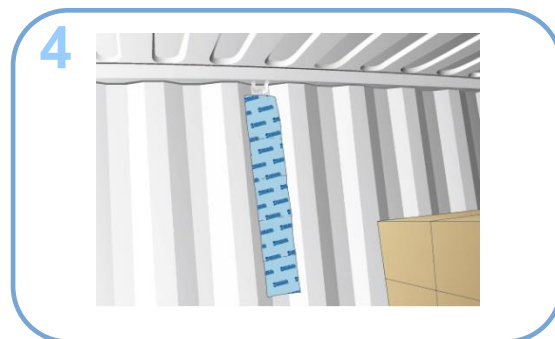
1 Seal all air ventilation holes with waterproof tape to create an enclosed environment.



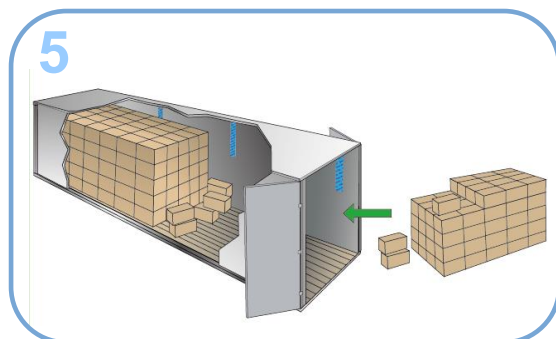
2 Take the desiccant out of carton.



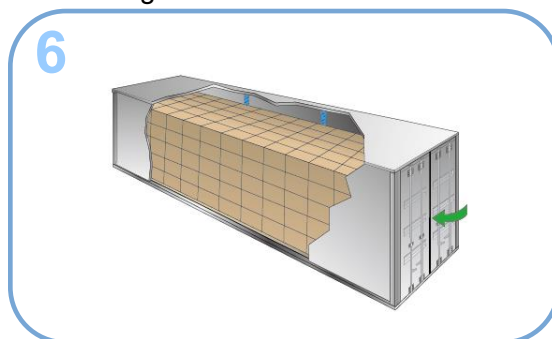
3 Open the plastic bag.



4 Distribute desiccants by hanging them from the ceiling hooks of the container.



5 Keep loading time short after hanging desiccant.



6 Seal the container door quickly.

5 MOISTURE PREVENTION SOLUTION FOR GARMENT ON HANGER

5.1 THE SUGGESTED POSITION OF DS 1700G



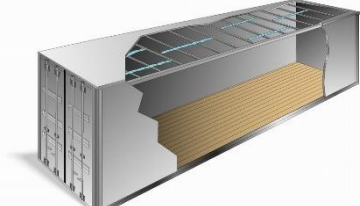
| | 20'GP | 40'GP |
|-----------------------------------------------------------------------------------|-----------------------------------------------------------------------------------|------------------------------------------------------------------------------------|
|  |  |  |

Table 4

5.2 GENERAL SUGGESTED DOSAGE OF DS 1700G

| Size of Container | Amount of DS 1700g (pcs) | |
|-------------------|--------------------------|----------------|
| | Wet Season | Non Wet Season |
| 20' GP GOH | 4 | 3 |
| 40' GP GOH | 8 | 6 |

Table 5

Notes:

- This is general usage suggestion and additional Super Dry Desiccant may be required depending on materials, conditions and history of problems.
- For high risk material, such as real leather, imitation leather, PU, cotton, feathers, garment containing artificial fibers, etc. Please add 2 pcs per container.



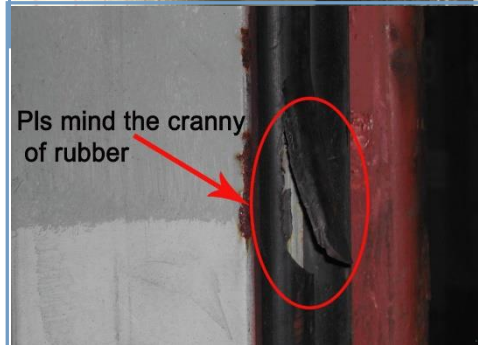
- For floors in excess 20% moisture content add 1 pc for each 1.5%.
- If pallets are used in container and over 18% moisture content, add 1 pc for each 1.5%.
- For rainy season or humid area add 1 or 2 pcs per container if necessary.

5.3 THE PROCEDURE OF USING DS 1700G

5.3.1 INSPECT THE CONTAINER BEFORE LOADING

Inspect the container, ensuring that:

- It is clean, dry, wind tight and water tight and fit for carriage of garments.
- It is free of damage: No “light leakage” from inside when container doors are closed; no holes or gaps in the floor or ceiling, gaps between floor and wall, etc.
- Doors close tightly and rubber seals in good condition.
- Surface clean and dry.
- Floor board properly dried after cleaning, no wet spots and feels dry when touching.

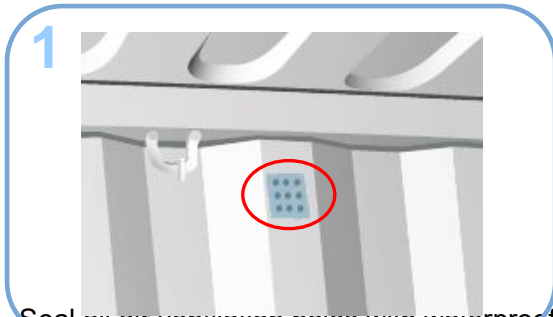


5.3.2 CHECK MOISTURE CONTENT OF CONTAINER FLOOR

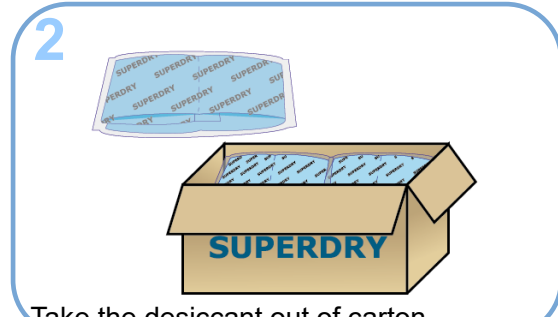
- We suggest using moisture content instrument (as below picture), or eyeballing or touching to check the moisture content of container floors.
- If possible, do not use container with moisture content exceeding 20%. Or please increase the amount of desiccant in the container.
- Do not use container with floor moisture content exceeding 25%.



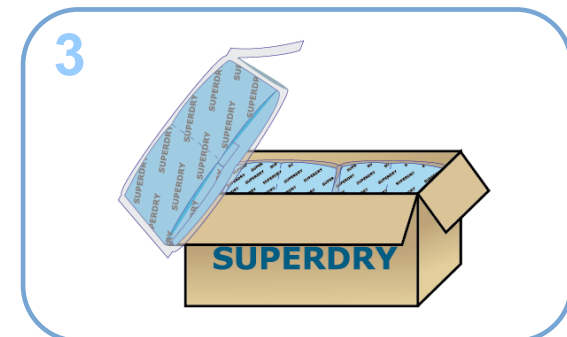
5.3.3 THE PROCEDURE OF USING DS 1700G



Seal all air ventilation noles with waterproof tape to create an enclosed environment.



Take the desiccant out of carton.



Open the plastic bag and removing the DS 1700 from their plastic bag.



Tie the desiccants on the container's top steel bars.



Keep loading time short after hanging desiccant.



Seal the container door quickly.

